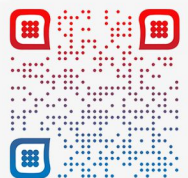




# COMPANY PROFILE

ECLAT ENGINEERING (PVT) LTD



www.eclatengineering.lk

# TABLE OF CONTENT

OVERVIEW OF THE COMPANY	01
COMPANY DETAILS	02
PLANT & MACHINERY	02
BUSINESS REGISTRATION CERTIFICATE	03
CAPABILITIES	04
SERVICES	07
POLICIES	10
PROJECTS COMPLETED	11
ONGOING PROJECTS	36
OTHER PROJECTS	40



# ABOUT US :



## OUR COMPANY

Éclat Engineering (Pvt) Ltd, established in 2016, is a leading civil engineering company registered under Grade C1 for building construction with the Construction Industry Development Authority (CIDA) of Sri Lanka. Since its inception, the company has built a solid reputation for delivering reliable and high-quality engineering solutions, specializing in design, construction, and project management across commercial, residential, and infrastructure sectors.

We take a client-focused approach, managing each project with meticulous attention to unique requirements. Our team prioritizes client satisfaction through personalized service, clear communication, and innovative, cost-effective solutions. Transparency and integrity are embedded in all aspects of our work, fostering long-term relationships with clients, partners, and stakeholders. Éclat Engineering offers a comprehensive range of services, with particular expertise in steel construction. Our capabilities include structural steel design, precision fabrication, import and supply of pre-engineered materials, on-site erection and installation, and roofing and cladding work. These services are executed using modern engineering software, high-performance equipment, and a skilled professional team to ensure durability, safety, and efficiency in every project.

All technical operations are carried out with high-performance machinery and strict quality control measures. Full compliance with FM Global, BS, and EN standards is maintained across all stages of project execution. Strong financial discipline ensures that projects are delivered on time and within budget.

Our core strength lies in providing complete, end-to-end engineering solutions—from initial concept through to final implementation. With a commitment to continuous improvement and adherence to industry best practices, we consistently deliver exceptional outcomes. Éclat Engineering (Pvt) Ltd stands as a dependable and capable partner for high-performance construction and engineering needs across a diverse range of sectors.



## OUR VISION

To be a respectable civil contractor delivering beyond expectation, always



## OUR MISSION

To strengthen our position as a market leader by offering competitive pricing, provide safe working conditions and deliver quality work within reasonable time frame.

# COMPANY DETAILS

**COMPANY NAME** : ÉCLAT ENGINEERING (PVT) LTD

**NATURE OF BUSINESS** : DESIGN, CONSTRUCTION & PROJECT MANAGEMENT

**ADDRESS** : NO 324, BIYAGAMA ROAD, PATTIYA, KELANIYA

**TELEPHONE** : +94 76 828 7839/ +94 77 757 9927

**WEB SITE** : [www.eclatengineering.lk](http://www.eclatengineering.lk)

**E-MAIL** : [chamila@eclateng.lk](mailto:chamila@eclateng.lk)  
[prasad@eclateng.lk](mailto:prasad@eclateng.lk)

**CIDA REGISTRATION NO** : 19770

**CIDA GRADE** : C 1 (Building)

**BUSINESS REGISTRATION NUMBER** : PV114983

**VAT REGISTRATION NUMBER** : 100916886-7000

**BANKERS** : HATTON NATIONAL BANK - KIRIBATHGODA  
PEOPLE'S BANK - KIRIBATHGODA



# BUSINESS REGISTRATION CERTIFICATE



ආකෘති } 2 අ  
පடிවෘත්ත } 2අ  
FORM } 2A

ශ්‍රී ලංකා ප්‍රජාතාන්ත්‍රික සමාජවාදී ජනරජය  
இலங்கைச் சனநாயக சோசலிசக் குடியரசு  
DEMOCRATIC SOCIALIST REPUBLIC OF SRI LANKA

සමාගමේ අංකය }  
கம்பனி இலக்கம் }  
No. of Company }

අ	ව	
P	V	114983
1 <sup>වන</sup>	වන	

2007 අංක 7 දරණ සමාගම් පනත  
2007 ஆம் ஆண்டின் 7 ஆம் இலக்கக் கம்பனிகள் சட்டம்  
The Companies Act, No. 7 of 2007

පෞද්ගලික සමාගම

தனியார் கம்பனி

PRIVATE COMPANY

සංස්ථාගත කිරීමේ සහතිකය

கூட்டிணைப்புச் சான்றிதழ்

CERTIFICATE OF INCORPORATION

(5 වන වගන්තිය අනුව)

(பிரிவு 5 இன் பிரகாரம்)

(Pursuant to Section 5)

ඉ ක්ලැට් ඉංජිනියරින් (පුද්ගල) ලිමිටඩ්

11/07/2014

2007 අංක 7 දරණ සමාගම් පනත යටතේ අවශ්‍යතා සපුරා ඇති බවින් පෞද්ගලික සමාගමක් වශයෙන් අද දින සංස්ථාගත කළ බවත්, එකී සමාගම සීමාසහිත බවත් මම මෙයින් සහතික කරමි.

දෙදහස්... ක් වූ ..... මස..... දින..... වන මෙදින කොළඹ දී අත්සන්කොට දුනිමි.

இக்ளேட் இன்ஜினியரிங் (புறவைட்) லிமிடட்

2007 ஆம் ஆண்டின் 7 ஆம் இலக்க கம்பனிகள் சட்டத்தின் கீழான எல்லாத் தேவைப்பாடுகளும் இணங்கியொழுக்கப்பட்டு இத் திகதியன்று தனியார் கம்பனியாக கூட்டிணைக்கப்பட்டுள்ளது என்றும் அக்கம்பனி வரையறுக்கப்பட்டதென்றும் நான் இத்தால் சான்றளிக்கின்றேன்.  
பதினாறு ஜூலை பன்னிரெண்டாம்  
இரண்டாயிரத்து ..... ஆம் ஆண்டு ..... மாதம் ..... திகதியன்று கொழும்பில்  
என்னால் கைச்சாத்திட்டுக் கொடுக்கப்பட்டது.

I hereby certify that .....

E'CLAT ENGINEERING (PRIVATE) LIMITED

is this day incorporated as a Private Company having complied with the requirements under the Companies Act, No. 7 of 2007 and that the Company is limited.

Given under my hand at Colombo, this ..... day of ..... Two Thousand .....



සමාගම් රෙජිස්ට්‍රාර් ජනරාල්  
கம்பனிகள் - பதிவாளர் நாயகம்  
Registrar-General of Companies



## OUR CAPABILITIES

At Éclat Engineering, we specialize in Commercial Building Projects — from initial design and planning all the way through to construction and post-completion support. But our capabilities go far beyond the conventional. Here's what we do best

### Specialized Projects

We handle unique structural requirements with precision. Our specialized projects include:

#### Steel Design & Construction

We offer end-to-end steel solutions, including:

1. Structural steel design by certified engineers
2. Local fabrication at a state-of-the-art facility
3. Import and supply of pre-fabricated steel components
4. Expert installation and erection with full safety compliance
5. Roofing and cladding solutions that are both durable and aesthetic

Every component we design, fabricate, or install is **rigorously tested** to meet — or exceed — industry standards. Because at Éclat Engineering (Pvt) Ltd, **we never settle for “good enough.”**







## OUR CAPABILITIES

### Industrial & Factory Development

We design and construct robust industrial spaces. Our tailored solutions ensure high performance, durability, and compliance with industry standards.



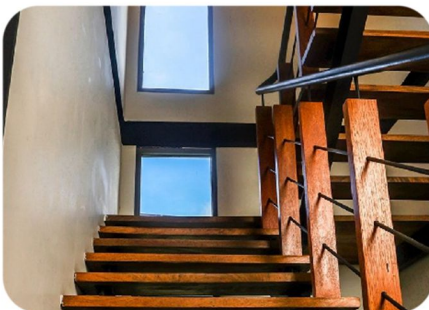
### Commercial Construction & Refurbishment

Whether it's a luxury hotel, a modern office building, or a service center, we create sophisticated spaces that blend functionality with aesthetic excellence. Refurbishment projects are handled with minimal disruption and maximum attention to detail.



### Residential Projects

From high-end bungalows to custom homes, we deliver personalized residential solutions that combine luxury, comfort, and long-lasting value.







## OUR CAPABILITIES

### Institutional & Educational Facilities

We construct safe, functional, and inspiring environments for learning. Our expertise includes multi-story buildings and institutional facilities designed to meet educational demands.



### Project Management & Consulting

Our expert project managers oversee every detail — from initial consultation to completion. We ensure:

- 👉 Seamless coordination
- 👉 Timely delivery
- 👉 Budget control
- 👉 Regulatory compliance

We remove the stress, so you can focus on your goals.

### Post-Completion Support & Maintenance

We believe in long-term partnerships, not one-time projects. Our maintenance and renovation services ensure that your investment remains safe, efficient, and future-ready.

### Our People, Our Power

Our team is the backbone of our success — a dedicated group of engineers, consultants, technical officers, and support staff who uphold the Éclat Engineering (Pvt) Ltd spirit of excellence and integrity. We also take pride in our financial discipline, ensuring each project is sustainable, secure, and scalable.



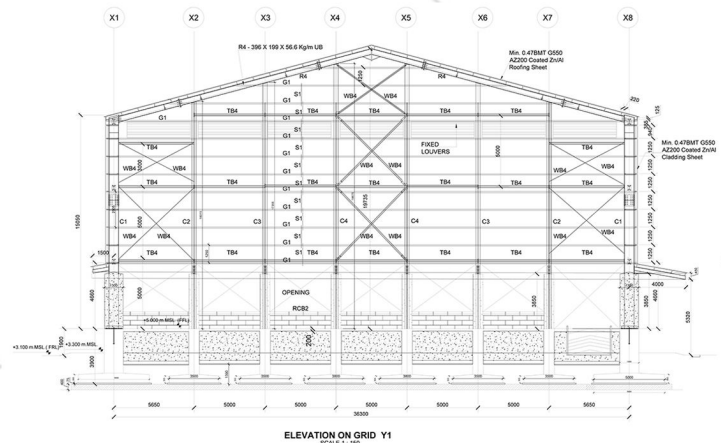
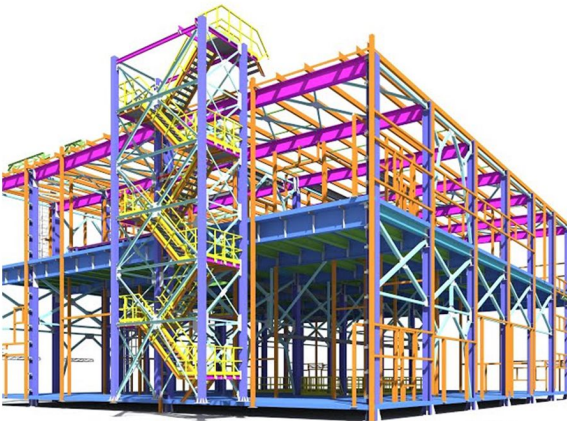
# SERVICES

## Innovative Steel Solutions

Éclat Engineering (Pvt) Ltd. offers high-quality steel solutions designed to deliver durability, efficiency, and cost-effectiveness for various industrial, commercial, and residential applications. Our comprehensive steel services include:

### Steel Design

We provide customized steel structure design services, tailored to meet the specific needs of each project. Our team, including Chartered Engineers, Senior Structural Engineers, and Qualified Engineers of Sri Lanka, uses advanced software and engineering practices to design structures that maximize strength and minimize material usage, ensuring both functionality and cost-efficiency for commercial, industrial, and residential applications.





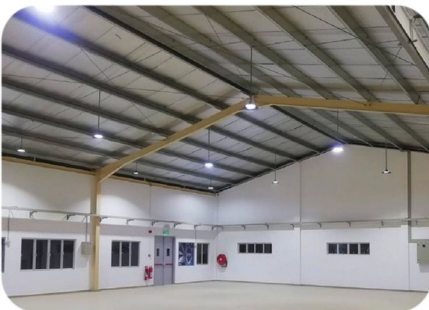
## Import & Supply

We specialize in providing pre-fabricated and pre-engineered services. In response to requests for importing steel structures from global suppliers, we offer a comprehensive solution. Our team efficiently handles the entire importation process, sourcing steel from trusted suppliers worldwide. With our streamlined supply chain management, we guarantee timely deliveries. Additionally, we implement rigorous quality checks and continuous progress monitoring to ensure that all materials meet the highest standards and project specifications. This approach keeps your project on track, within budget, and aligned with your timeline.



## Steel Erection & Installation

Our skilled team, which includes Experienced Engineers, Technical Officers and Supervisors ensures the safe and accurate erection of steel structures on-site. We specialize in the erection of steel columns, beams, trusses, and other components. Adhering to the highest safety standards, we guarantee the stability and integrity of every structure, regardless of the project size. Whether it's a small building or a large industrial complex, we complete every installation with precision, ensuring your project progresses smoothly.





## Roofing and Cladding Work

At Eclat Engineering (Pvt) Ltd, we provide expert roofing and cladding services for a wide range of structures, including commercial, industrial, and residential buildings. Our team delivers high-quality, durable roofing and cladding solutions using a variety of materials, ensuring long-lasting protection and aesthetic appeal. We also offer canopy and louver panel installations, enhancing both functionality and the visual impact of your building. Trust us to provide reliable, weather-resistant, and cost-effective solutions for all your roofing and cladding needs.





# **POLICIES**

## **Quality Policy**

At Éclat Engineering (Pvt) Ltd, we maintain a commitment to providing high-quality services that meet customer expectations. The Quality Management System (QMS) that we have implemented ensures compliance with Sri Lanka's legal and regulatory requirements. We actively pursue continuous improvement of our processes to deliver successful outcomes, with a focus on efficient resource utilization and performance monitoring.

## **Health & Safety Policy**

The company is dedicated to creating a safe and healthy work environment for all employees, contractors, and visitors. An Occupational Health & Safety Management System (OH&SMS), tailored to the construction industry, has been established to prevent accidents and health risks. Compliance with all health and safety regulations in Sri Lanka is strictly maintained. We prioritize hazard elimination and risk reduction, and worker participation in health and safety decisions is encouraged to foster a culture of safety awareness.

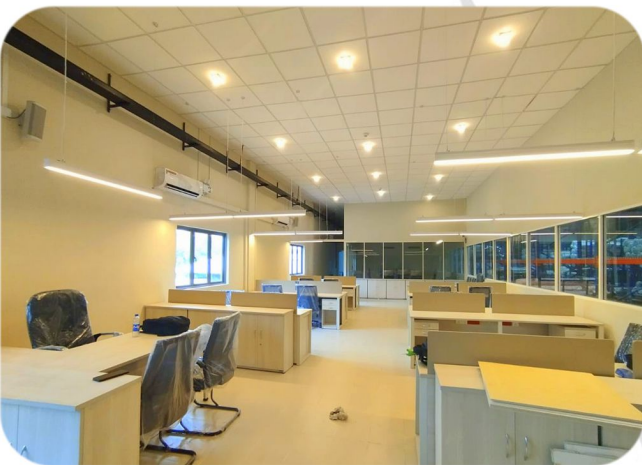
## **Environmental Policy**

Environmental protection is pursued through the responsible management of operations. The Environmental Management System (EMS) that has been implemented ensures that construction activities minimize environmental impact. Pollution prevention measures are enforced, and equipment is managed to reduce its environmental footprint. Full compliance with Sri Lanka's environmental laws and regulations is maintained across all projects.



# STORES BUILDING AT JAY JAY MILLS LANKA (PVT) LTD. AWISSAWELLA.

DURATION - 07 MONTHS





# NEW PRODUCTION FACILITY FOR EBONY HOLDINGS (PVT) LTD AT WARIYAPOLA.

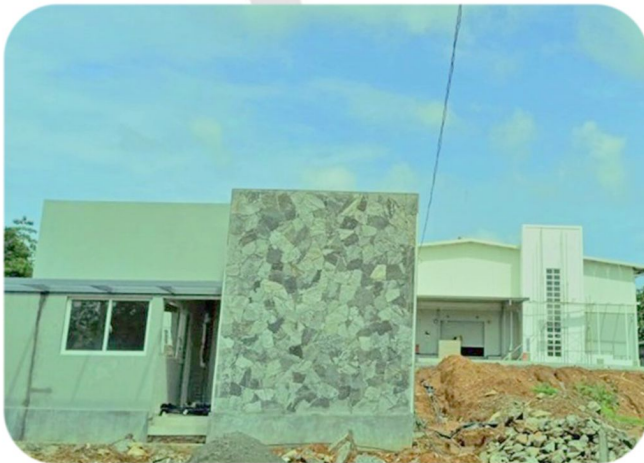
DURATION - 12 MONTHS





# PROPOSED TEA & FOOD PACKING FACILITY AT HORANA FOR ENRICH TEA & FOOD EXPORTS (PVT) LTD

DURATION - 10 MONTHS





# MAS KREEDA – FACTORY EXPANSION – PHASE I MAHIYANGANAYA

DURATION - 06 MONTHS





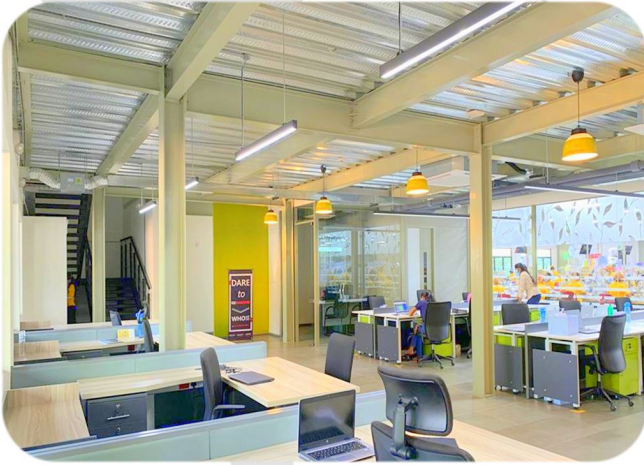
# MAS KREEDA – FACTORY EXPANSION – PHASE II MAHIYANGANAYA

DURATION - 06 MONTHS



# PROPOSED FACTORY & OFFICE EXPANSION AT BODYLINE (PVT) LIMITED, AGALAWATTA

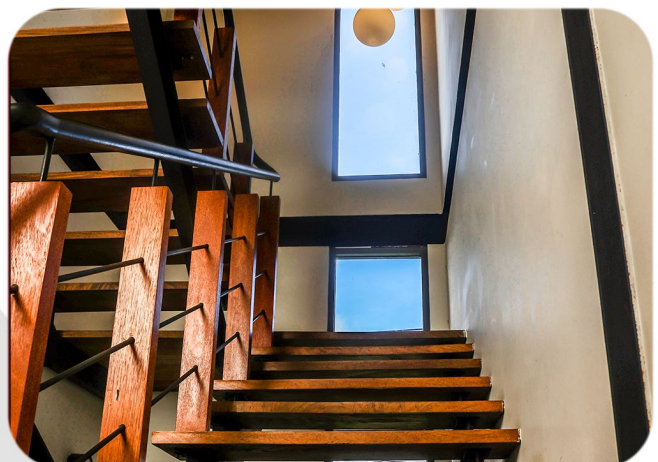
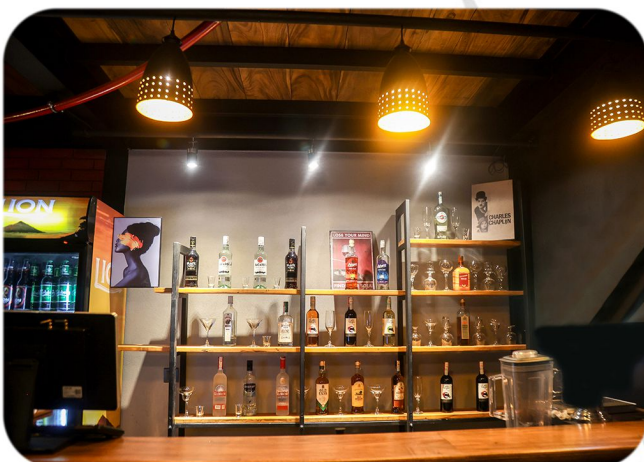
DURATION - 05 MONTHS





# PROPOSED TOURIST HOTEL FOR RPC LEISURE (PVT) LTD – NUWARA ELIYA.

DURATION - 12 MONTHS





# CIVIL AND FLOORING WORKS PROPOSED FIVE STORY BUILDING AT ST. ANTHONY'S COLLEGE, KANDY.

DURATION - 06 MONTHS





# PROPOSED STEEL MEZZANINE FLOOR AT HIRDARAMANI – AGALAWATHTHA

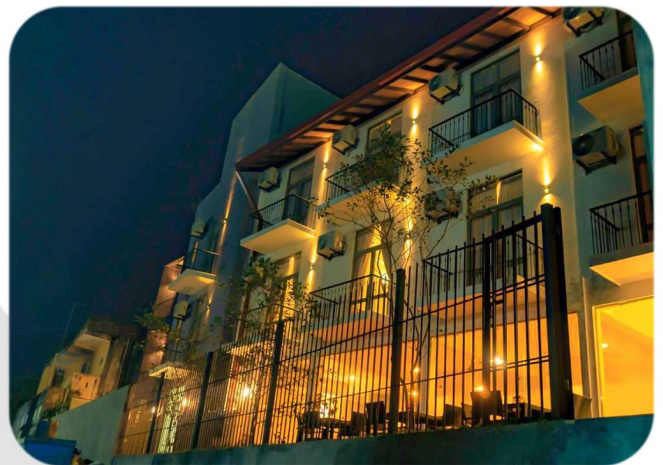
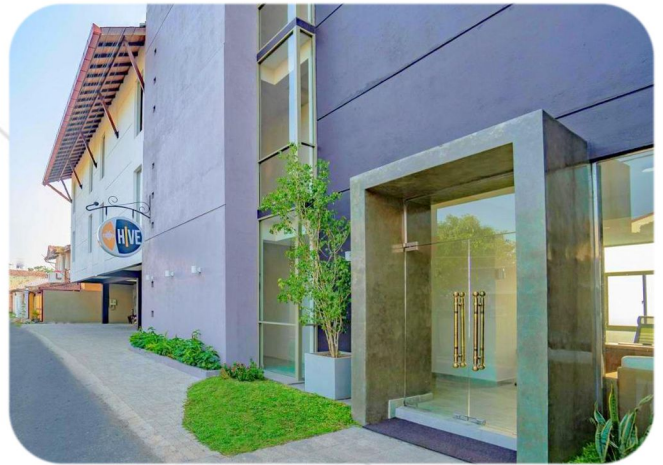
DURATION - 3.5 MONTHS





# HIVE 68 HOTEL AT NO 68 GRAND ST, NEGOMBO

DURATION - 10 MONTHS





# PROPOSED DEVELOPMENT FOR MAS ATHENA AT MAS FABRIC PARK, THULHIRIYA.

DURATION - 05 MONTHS





# GATEHOUSE PROJECT AT JAY JAY MILLS LANKA (PVT) LTD. ERAVUR.

DURATION - 04 MONTHS





# PROPOSED LOADING / UNLOADING BAY & CHEMICAL STORE ROOM FOR MAS TEXO (PVT) LTD THULHIRIYA.

DURATION - 03 MONTHS





# SEWING FLOOR AND CANTEEN EXTENSION PROJECT AT HIRDARAMANI INDUSTRIES (PVT) LTD- KURUWITA

DURATION - 04 MONTHS





# PROPOSED FACTORY EXPANSION AT MAS KREEDA BALANGODA

DURATION - 04 MONTHS



# PROPOSED EFFLUENT RECYCLING PLANT AT ORIT APPARELS LANKA (PVT) LTD – AVISSAWELLA.

DURATION - 03 MONTHS





# PROPOSED FACTORY EXPANSION FOR JAY JAY MILLS LANKA (PVT) LTD MATARA.

DURATION - 04 MONTHS



# PROPOSED 8TPH HYBRID BOILER PLANT HOUSE FOR TEXO (PVT) LTD AT MAS FABRIC PARK, THULHIRIYA.

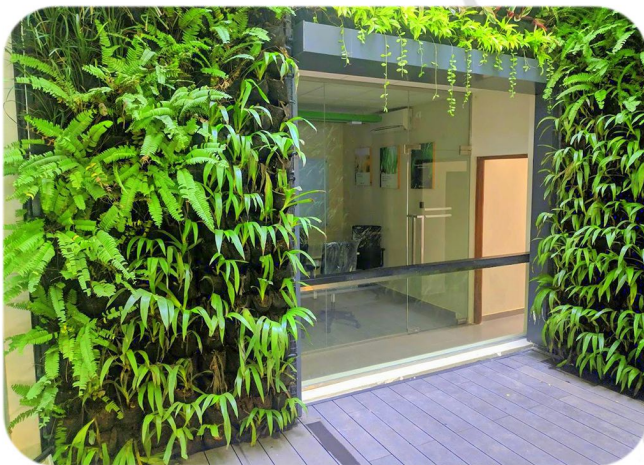
DURATION - 03 MONTHS





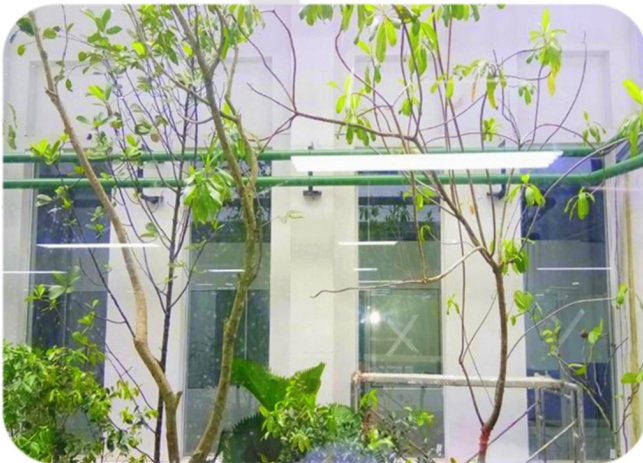
# UPFIELD LANKA (PVT) LTD. AT COLOMBO 7

DURATION - 03 MONTHS



# HIRDRAMANI INDUSTRIES (PVT) LTD AT MAHARAGAMA

DURATION - 03 MONTHS





# ADDITION & ALTERATION FOR BRANDIX FACTORY – BATTICALOA.

DURATION - 03 MONTHS



# RESTAURANT FOR SOORIYA VILLAGE AT SKELTON ROAD, COLOMBO 05

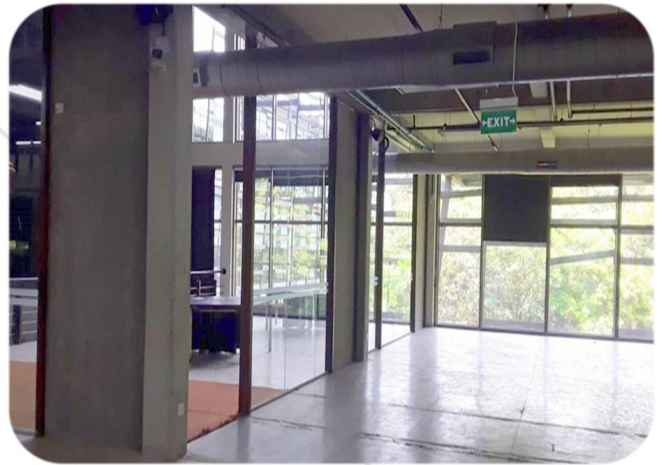
DURATION - 03 MONTHS





# OFFICE REFURBISHMENT WORK – BRANDIX WELISARA.

DURATION - 02 MONTHS



# PROPOSED SERVICE BUILDING FOR TEXLAN CENTER

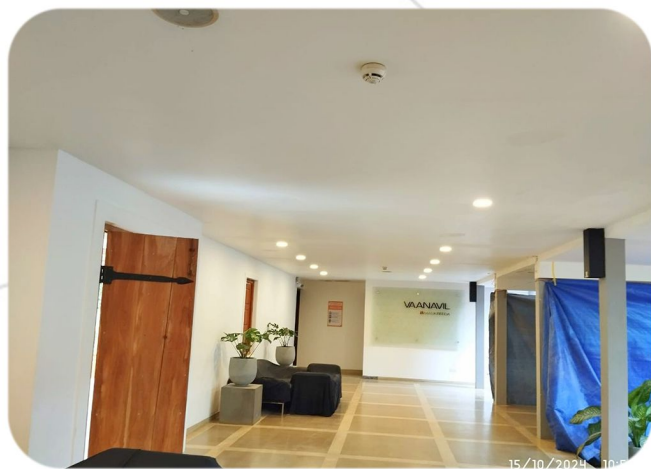
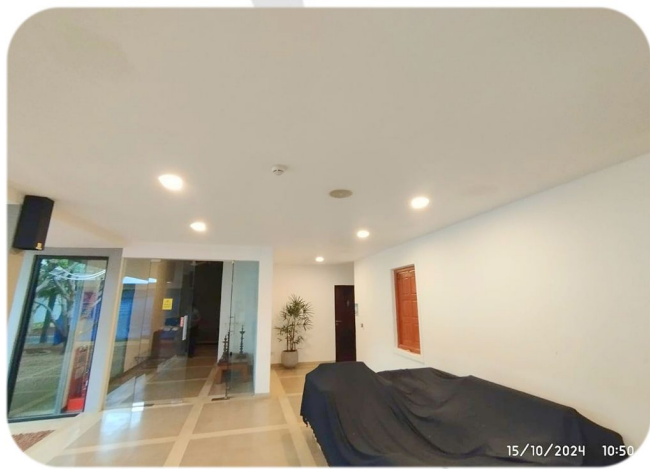
DURATION - 05 WEEKS






# PROPOSED RENOVATION PROJECT MAS KREEDA VAANAVIL.

DURATION - 02 MONTHS



The background of the page is a faded, high-angle photograph of a construction site. It shows a complex network of steel scaffolding and rebar structures. Several workers in hard hats are visible, some standing on platforms and others near a crane. The sky is a pale, hazy blue, suggesting a clear day. The overall tone is professional and industrial.

# **ONGOING** **PROJECTS**



# PROPOSED BOILER HOUSE BUILDING ERAVURPATTU BATTICALOA.

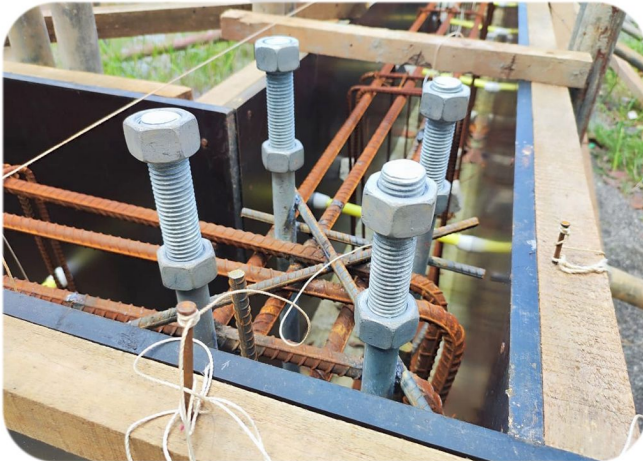
DURATION - 08 MONTHS





# PROPOSED BUSINESS DEVELOPMENT CENTER FOR DESIGN STUDIO MANUFACTURING (PVT) LTD AT ETHUL KOTTE.

DURATION - 06 MONTHS





# SECURITY & ADMINISTRATION BUILDINGS FOR SLIMLINE PANNALA

**BUILDING A - 04 MONTHS**

**BUILDING C - 03 MONTHS**



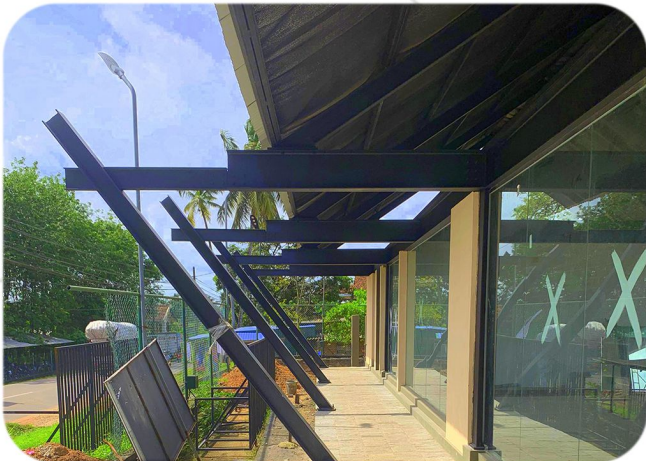
**BUILDING A**



**BUILDING A**



**BUILDING A**



**BUILDING A**



**BUILDING C**



**BUILDING C**



# OTHER PROJECTS

- 👉 PROPOSED FACTORY EXPANSION AT ESKIMO NEGOMBO.
- 👉 STEEL FABRICATION WORK FOR UNILEVER SRI LANKA LIMITED AT HORANA.
- 👉 CHALET RENOVATION AT MAS KREEDA SHADELIN – MAHIYANGANAYA.
- 👉 PROPOSED BOILER HOUSE AND PANEL ROOM FOUNDATION WORK AT MAS FABRIC PARK, THULHIRIYA.
- 👉 PROPOSED DIESEL TANK FOR PRYM INTIMATES (PVT) LTD.
- 👉 PROPOSED BOUNDARY FENCE FOR JAY JAY TEXTILES (PVT) LTD ERAVUR